



BMW Clubs
International Council



BMW Motorcycle Club New Zealand

NEWSLETTER

Official BMW Club - *Established* 1975

September 2024

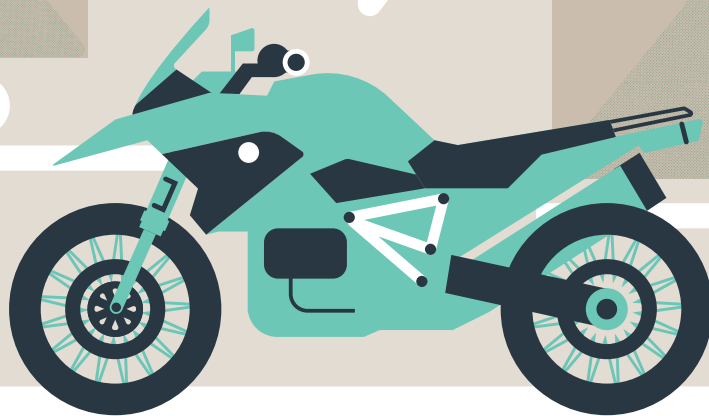


BMW Motorcycle Club
New Zealand



MEMBER OF THE INTERNATIONAL COUNCIL OF BMW CLUBS

I'll SHOW
YOU PARTS OF
THE WORLD
OTHERS' FEAR



Just like a BMW R1200, every motorcycle has a unique character. Which is why we design insurance that's anything but off-the-shelf. If you have a bike that helps you escape the ordinary, talk to us about customised insurance you won't find anywhere else.

Star Insure Morotcycle. It's the insurance your bike would choose.

ESCAPE THE
ORDINARY

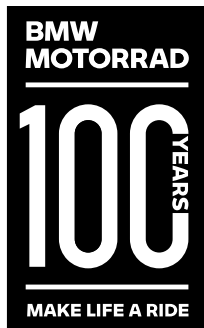


0800 250 600



starinsure.co.nz

starinsure
Motorcycle



BMW Motorcycle Club
New Zealand



EDITORIAL COPY TO:

Colin Gates
newsletter@bmwmc.nz

OTHER CORRESPONDENCE TO

The Secretary
BMWMCNZ
PO Box 109-245
Newmarket
Auckland 1149
New Zealand

PRESIDENT

Chris Souness
021 494 952
president@bmwmc.nz

VICE PRESIDENT

Stephen Parkinson
021 989 092
vicepresident@bmwmc.nz

SECRETARY

David Fish
021 927 901
secretary@bmwmc.nz

TREASURER

Colin Gates
027 9222 350
treasurer@bmwmc.nz

MEMBERSHIP SECRETARY

Barry Petherick
027 341 6949
membership@bmwmc.nz

AREA REP LIAISON

Ian Marcartney
027 281 0242
arl@bmwmc.nz

BMWMC GEAR

shop@bmwmc.nz

PRIVACY OFFICER

privacy@bmwmc.nz

**THANK YOU for your
feedback and stories**
feedback@bmwmc.nz

Contents

- 3 [New Members \(below\)](#)
- 5 [President's Podium](#)
- 6 [Area Reports \(Start\)](#)
- 16 [AGM 2025 Update](#)
- 18 [AGM 2025 Registration form](#)
- 24 [Corporate Communication](#)
- 32 [Market Place](#)
- 34 [Area Representatives details](#)

Welcome to our New Members

We hope you'll take part in many of your local and national events. Your Area Rep will be pleased to introduce you to other members in your area. Our monthly newsletter is an open forum for all members. If you fancy a story and/or photos published about your ride, the rebuild of your bike, a book you might have read or a movie you have seen lately, or just want to get something off your chest about how the club is going, then please email/phone the Editor no later than the 2nd day of the month.

We look forward to your contributions.

A Very Warm Welcome to:

COSTELLO	Jared	RUAKAKA
DOUGLAS	Bruce	CHRISTCHURCH
WOODS	Claire	GLENBROOK
WOODS	Rob	AUCKLAND

Please Note: Any material intended for publication in the newsletter should reach the Editor no later than the 2nd day of any month but the earlier the better. The Newsletter is an open forum for all members. Views expressed by members may not necessarily represent the views of BMWMC. Publication of all material is subject to the Editor's discretion. Photos are courtesy of article authors and/or usually credited when known, unless requested otherwise.

Cover picture: South Island

Photo by: Martin McCarron

Date: June 2024



**BMW
MOTORRAD**



MCIVER & VEITCH THE SOUTH'S AUTHORISED BMW MOTORRAD DEALER

mciverandveitch.co.nz

MAKE LIFE A RIDE



**Authorised BMW
Motorrad Dealer**

McIver & Veitch
112 Crawford Street
Dunedin
(03) 477-0236
sales@mciverandveitch.co.nz
mciverandveitch.co.nz

**MCIVER
&
VEITCH**
Motorcycling Since 1932



President's Podium

Chris Souness



BMW Motorcycle Club
New Zealand



September 2024

Hi, everyone

I write on behalf of Chris who is away on a well-deserved holiday. Chris will be thinking of us over a pina colada or two and I'm sure would love to write in, but that wouldn't be a holiday, would it? 😊

Coinciding with Spring and for many the time to start riding again. It is as good a time as any to be mindful of what we have as a club. We are achieving many milestones and strengthening our community of passionate riders.

The camaraderie, and adventure, has always been emphasised. And, through these principles, we continue to build a stronger and more vibrant club. Commitment to our shared goals remains steadfast and we are proud to be able to celebrate our 50th next year!

I am excited to remind all, especially new members, of our events for this year, which I am delighted to report many have booked:

GS Rally - is happening later this month and is now officially closed to new entrants. This event promises to be filled with exciting activities and scenic routes.

South Island RAG: Our next RAG is in Reefton, South Island in early November. Let's come together to support a great cause and make a positive impact in our community.

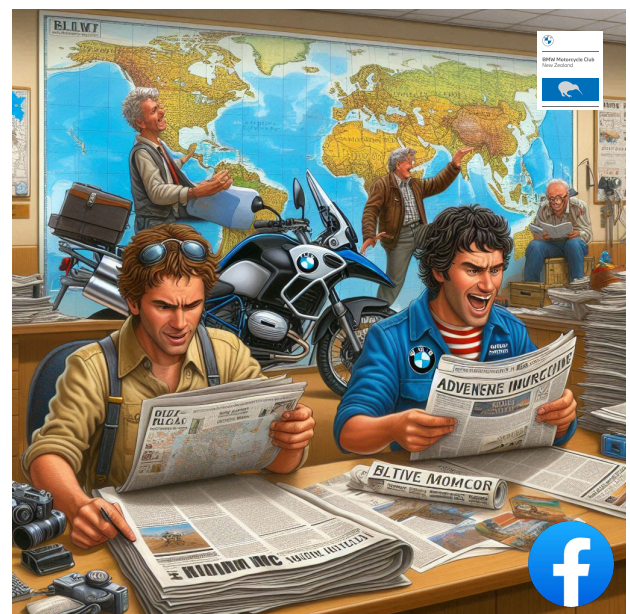
Monthly Social Rides: In most regions, we are fortunate to have and grateful to the Area Reps. In most cases, you will receive timely emails about social gatherings/rides in your area. If you're not, it might be there isn't an Area Rep close by, or you are not on their mailing list (easily solved). If you are not attending, like the National events, they are a great opportunity to connect with fellow riders and make new friends.

The Club engine room keeps turning and everyone is looking forward to many more great adventures on the open roads.

Safe riding.

Enjoy your Hols Chris! Ciao,

Colin



Area Report: East Coast

John Wuts



On Wednesday 28 August sixteen members and ex-members gathered at the Ilona Pasta restaurant in Napier. A most convivial evening was enjoyed by all those present, with the riding members looking forward to the spring and more pleasurable riding temperatures.

From left: Walter, Ann, Alan, Danny, Peter, Mike, Tony, Maria, Bronwen, Rosemary, Les, Stella and Pam. Carole and Robert joined us a bit later. **John #1867**

ARCADIA MOTEL
CHRISTCHURCH
Comfortable, spacious affordable accommodation

FREEPHONE 0800 272 23 42
564 Ferry Road, Woolston, www.arcadiamotel.co.nz
Geoff Lester 027 285 1293

Area Report: Taranaki Tales

Wayne Higgins



August's Ride

Last month's ride was to the Awakino Pub for lunch. This is always a popular ride and this month was no exception with eight bikes and one pillion.

This day saw a fair amount of traffic. We had to weave our way through it all, quite unusual for a Sunday.

We had not long got to our lunch destination when another motorbike club turned up from Taumarunui. It is always enjoyable having a chat with like-minded people.

Pretty good weather all the way but teased us with a bit of a drizzle at Awakino so a few of us got our wet weather gear on. Three k's out we were back into good weather. Coming back over Mt Messenger we got a view of the progress that has been made for the bypass. It will be a pity to lose Mt Messenger as a motorbike ride but will be great for the traffic flow.

After Mt Messenger we did a few back roads from Urenui. On one road we followed the Onearo River Road and then went through the back of Lepperton over Birchtrand Bridge (an old wooden, one-lane bridge) built back in the early 1900's.

We finished off the ride at Lepperton for a debrief and went our separate ways.

On another note, a local shop Motor Culture had a grand opening on the 17th August and are now partnered with Motorrad. So, BMW bikes and gear are now sold and serviced here in New Plymouth. A great addition to our area!



Wayne #4097



**BMW
MOTORRAD**



PRESENTS GS RALLYE 20-22 SEPT

**BUY ANY NEW GS MODEL
BEFORE THE GS RALLYE AND
RECEIVE A FREE ENTRY**

LAKES RANCH ROTORUA | 20-22 SEPTEMBER 2024

Route Options Sealed; Gravel and Seal; Challenge (Road bikes welcome).

Event fee \$230, BMW riders \$185, BMWMCNZ members \$170, pillion \$140.

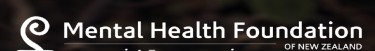
Includes 2 dinners, 2 breakfasts, tee shirt, stickers, sweep vehicle.

Old school route sheets provided, or create your own GPS file to suit your device.

Visit bmw-motorrad.co.nz to register

#SPIRITOFGS

MAKE LIFE A RIDE



Area Report: Rangitikei Roundup

Murray Petherick



August's Monthly Ride.



The monthly ride for August was held on Sunday the 11th which transpired to be another winter's day that threatened a bit of inclement weather.

The plan was to meet at the Gingerbird Café in Colyton and then head to the Apiti Tavern for lunch. I arrived at the café about 45 minutes prior to the proposed departure time, thinking I was well ahead of schedule, only to find most the rest of the team already ordering or enjoying a morning coffee! We assembled a group of nine intrepid riders, but this time were again without any pillions; must be a time of year thing!

While the weather during my trip up through the Manawatu had been fine it was accepted that less favourable conditions were likely to be found as the journey headed into the Rangitikei hill country. Three of the assembled group opted to take the "Ridge Road" route to Apiti, to enjoy a bit of gravel time, while the other six of us took the sealed

road up the east side of the Pohangina Valley. As it transpired both groups enjoyed uneventful rides, with only a bit of light precipitation being encountered, and arrived at the Tavern within a few minutes of each other. I am able to report that the "Gatwick Express" which has for several years been parked in a paddock near the top of the Pohangina Valley, has not yet left the station.

Don took a couple of photos of some of the team arriving at, and after leaving Colyton, and I had the Go Pro ready for action, although rain spots on the lens do tend to distort the image somewhat!

Following a relaxed chat session over lunch, and then finally sorting out an apparent meal non-payment (which had actually been paid) we headed homewards. Don and Robin headed directly down to Kimbolton while the rest of the group took the loop up and through Rangiwahia, then on down to Kimbolton. For the second time that I can remember one veteran rider, who

Cont...

Area Report: Rangitikei Roundup

Murray Petherick



Cont...



shall remain nameless, couldn't wait until Cheltenham to turn off towards Whanganui and indicated a right turn at Kimbolton, before changing his mind. Turning right from Kimbolton is OK but makes the trip back to Whanganui rather longer!

like-minded company, is well worth taking.

Brunch Gathering

The monthly brunch gathering was held at Viv's Kitchen in Sanson on Sunday 25th. The Pillion and I couldn't make it as we were 'down south' enjoying a family occasion, but I understand a group of about 11 gathered for coffee and a chat.v



On balance, not a bad day out. I guess any chance you get to run some oil around the motor, cover a few kms in reasonable conditions, and enjoy a bit of

Murray #2690



**BMW
MOTORRAD**

ContinentalMotorrad



AFFORDABLE EXCELLENCE

0% DEPOSIT, LAMS APPROVED, 3-YEAR WARRANTY AND LESS THAN A CUP OF COFFEE A DAY TO OWN. TICKS ALL THE BOXES.

G 310 R FROM \$46.29 PER WEEK*
G 310 GS FROM \$57.66 PER WEEK*

MAKE LIFE A RIDE

G310R *Weekly payments are estimated \$46.29 , 48 monthly instalments of \$200.59 and a total amount payable of \$9628.32 apply. Alpha Finance Terms, Conditions & Fees apply. Offer ends 31/12/2024 or while stocks last. Not available in conjunction with any other offer. Alpha Finance reserves the right to vary, withdraw or extend this offer.

G310GS *Weekly payments are estimated \$57.66 , 48 monthly instalments of \$249.88 and a total amount payable of \$11994.24 apply. Alpha Finance Terms, Conditions & Fees apply. Offer ends 31/12/2024 or while stocks last. Not available in conjunction with any other offer. Alpha Finance reserves the right to vary, withdraw or extend this offer.

Offer only available at Continental Motorrad Auckland and Wellington.

**Authorised BMW
Motorrad Dealers**

Continental Motorrad Auckland
45-65 Wairau Road, Wairau Valley,
North Shore, Auckland
021 406 326
salesakl@cmbmw.co.nz
continentalmotorrad.co.nz

Continental Motorrad Wellington
138 Hutt Road
Kaiwharawhara, Wellington
(04) 499 9030
saleswlg@cmbmw.co.nz
continentalmotorrad.co.nz

Area Report: Wellington

Denis Hulston



Club Social Meet & Eat 5th August

Sixteen members met for food and lots to talk about at our regular first social meeting of the month. Ian, Lyn, Martyn, Sue, Annie, Denis Alasdair, Mike, Peter, Jenny, Dave O, Dave M, Cheryl, Keith, Brian and welcome to Colin, our new member. Lots of energy, good food and plenty of dialogue. .

Club Rides August

We were planning an overnight ride to Whanganui on Friday 16th August, but we cancelled the trip in the face of a wet and windy forecast, which proved to be the right decision since we wanted cruisy riding.

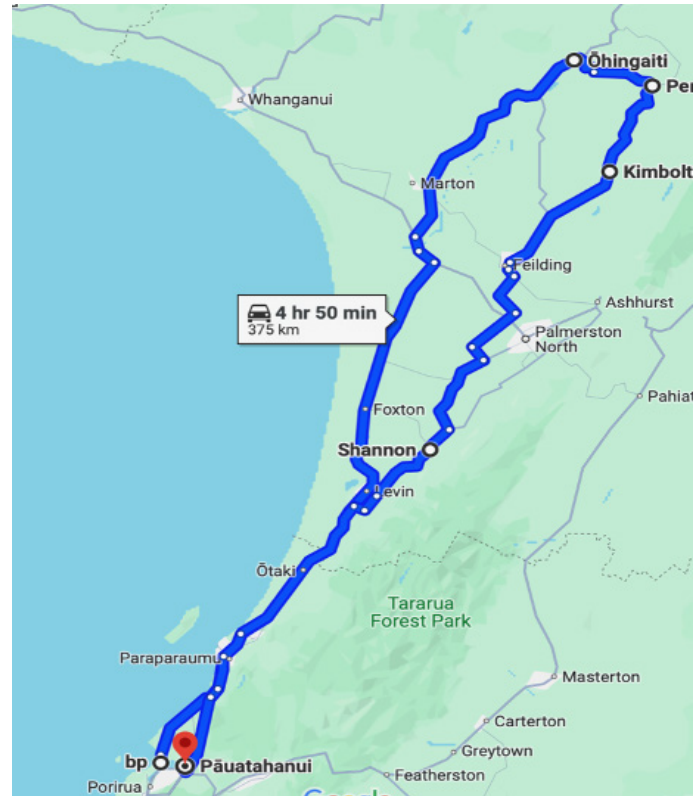
Our fallback was the best day's riding in August, an impromptu ride on Wednesday 14th August.

We set off from BP Mana at 9.30 am for the ride along the Paekakariki coast road, now Highway 59, and hard to believe that this was State Highway 1 before the completion of the Transmission Gully expressway. It's a great route, always blessed by the view Kapiti Island floating above the sea out north-west. We met Scott, at Kapiti BP, and Ian at Levin before the long straight ride to Sanson where we met

Dave and stopped for scones and coffee at the Woolshed.

All up we had ten riders, Denis, Annie, Martyn, Sue, Keith, Peter N, Phil, Scott, Ian, and Dave H. Our plan had been to ride back roads across the Rangitikei River at the Otara River Bridge near Ohingaiti to Kimbolton. However, Murray P warned me that the bridge was closed so we diverted at Vinegar Hill, north of Hunterville and tracked back north to Kimbolton at Cheltenham.

The riding was magic: no wind, relaxed, stunning sunshine colour and shadows, remnants of snow on Ruahines. We stopped for lunch at Hansen's Café in Kimbolton and then tracked back through Feilding for fuel, and back-routes to Shannon, led by Martyn who knows those routes well. What a cruisy day – 420km of relaxing riding – even the long Foxton straight was okay with sunshine and



views of the Tararuas and Ruapehu, and no wind. Thanks all for the ride.

Saturday 24th August

Again, we only had five riders turn out, but we enjoyed a magical day This was a local ride as an add-on to coffee at the Ground-up café in Pauahatanui. Most riders couldn't attend, so Keith and Ian H were left to enjoy each other's company and a short ride to Kapiti. The weather was fine and sunny, despite being sandwiched between heavy rain and wind.

Denis #3184



Kimbolton, Hansen's Café lunch



Kimbolton line-up



Kimbolton line-up





**BMW
MOTORRAD**



CHOOSE YOUR ADVENTURE

#SPIRITOFGS

MAKE LIFE A RIDE

*Some exclusions may apply. Colour options shown and models are subject to availability; options and colours may differ from images. All prices, availability and specifications are subject to change without notice by BMW Motorrad New Zealand. Valid while stocks last.



R1300GS
FROM \$35,990 + ORC



F900GSA
FROM \$27,990 + ORC



F900GS
FROM \$25,490 + ORC



F800GS
FROM \$21,990 + ORC

Authorised BMW Motorrad Dealers

CMG Motorcycles Christchurch
122 Saint Asaph Street,
Sockburn
(03) 353-6383
ride@cmgmotorcycles.co.nz
cmgmotorcycles.co.nz

Boyd Motorcycles Hamilton
403 Te Rapa Road
Waikato
(07) 850-4522
motorcyclesales@boyds.co.nz
boydmotorcycles.co.nz

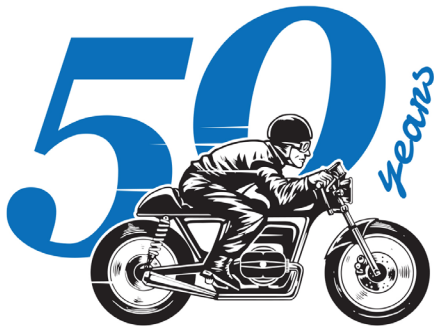
Continental Motorrad Auckland
45-65 Wairau Road, Wairau Valley,
North Shore
021 406 326
salesaki@cmbmw.co.nz
continentalmotorrad.co.nz

Experience Motorcycles Auckland
625 New North Road
Kingsland
(09) 845-5950
sales@experiencemotorcycles.co.nz
experiencemotorcycles.co.nz

Mclver & Veitch Dunedin
112 Crawford Street
(03) 477-0236
sales@mciverandveitch.co.nz
mciverandveitch.co.nz

Continental Motorrad Wellington
138 Hutt Road
Kaiwharawhara
(04) 499 9030
saleswg@cmbmw.co.nz
continentalmotorrad.co.nz

Mount Motorcycles Tauranga
23 Totara Street
Mount Maunganui
(07) 575-4190
sales@mountmotorcycles.co.nz
mountmotorcycles.co.nz



BMW Motorcycle Club

New Zealand 1975 - 2025

Making Life a Ride!

Annual Rally 7th-10th of February 2025 - Update



Planning for the Rally is well on track. With most of the significant actions now completed work continues tidying up the specific and minor details for a number of the activities.

Rally badges have been ordered and the Tee and Polo shirt designs have been completed. We have also just taken delivery of a large number of tote bags from our discount partner, Resene. These will be used for assembling your Rally Packs which you will receive on arrival at the Rally. Thanks for your support, Resene.

With assistance from Club treasurer, Colin, the registration forms have been 'tweaked' and improved to make them more 'user friendly'. The Saturday packed lunch for gravel riders has been included so there is no need for ordering directly from the Hotel. To simplify things at our end our preference is for registrants to please use the online form, which has been modified to allow for either card payment or direct credit bank payment. Note that with this form all fields are required to be completed so remember to record a zero for any meals or activities in which you are not participating, otherwise, the form will send you back to complete the field in question.

Registration forms are now available via the newsletter and the website. Be aware that there are time deadlines for some items, such as shirt orders and minibus tour bookings so don't leave registration too late.

The Saturday minibus rides to the Mt Bruce Sanctuary and the wine trail will be scheduled to stop at suitable lunch venues so the participants can enjoy suitable food and beverages in appropriate surroundings. Lunch and wine sampling etc will, of course, be at your own cost.

Anyone wishing to join the lunch group at the 'secret' venue on Sunday, but not wanting to participate in either of the rides, will be welcome to join the free minibus ride from the Hotel to the lunch venue. Please

Cont...



remember to let us know if you wish to do this so we know the appropriate numbers for catering.



Remember that The Copthorne Hotel is now taking room bookings for those wanting to get in early. Rally room rate is \$199 per night for either a king bed unit or a twin queen bed unit. For bookings contact the Hotel directly: phone 06 370 0500 or email 'reservations@solway.co.nz'. Quote the booking code #72266 to get the special Rally room rate. Please indicate willingness to room share, if appropriate.

More detailed information will be made available in due course but in the meantime, you may direct any enquiries you have to Peter Tibbs, Area Rep Wairarapa, email 'wairarapa@bmwmc.nz'.

The Rally Team

Peter, Denis and Murray.



Name 1				Membership number		
Name 2				Membership number		
Address					Post Code	
Mobile			Email			

Everyone registering receives a complimentary 50th Commemorative badge!	Cost /pp	Number	Total
Full Member Registration	\$40.00		\$0.00
Non-member Registration	\$60.00		\$0.00
Pillion / Partner Registration	\$20.00		\$0.00
Friday night tapas meal	\$22.00		\$0.00
Saturday Breakfast	\$25.00		\$0.00
Saturday Picnic Lunch (Gravel riders only) BYO or supplied by Copthorne Hotel	\$25.00		\$0.00
Saturday night dinner	\$59.00		\$0.00
Sunday Breakfast	\$25.00		\$0.00
Sunday night dinner - Normally \$45 (Subsidised by BMWMCNZ)	\$25.00		\$0.00
Monday Breakfast (available from 6.00am)	\$25.00		\$0.00

Rally Tee and Polo Shirts		Size	Qty	
Men S, M, L, XL, 2XL, 3XL		T-Shirts Men		\$0.00
		\$44.50 Women		\$0.00
Women XS, S, M, L, XL, 2XL		Polo shirts Men		\$0.00
		\$59.50 Women		\$0.00

Size Guide: www.fashionbiz.co.nz/size-guide

Saturday: Mt Bruce Sanctuary minibus tour (10:30 - 15:30)	\$20.00		\$0.00
Saturday: Martinborough wineries minibus tour (10:30 - 15:30)	\$20.00		\$0.00
Sunday: Star Insure Mystery Lunch (free minibus for non-riders Dep 9:45am)	FOC		FOC
TOTAL PAYMENT DUE			\$0.00

Payment to BMWMC account 03-1519-0034447-00
 PARTICULARS: Surname | CODE : AGM2025 | REF. Mobile or Member #

NOTES:

NON-MEMBER REGISTRATION *\$20.00 will be discounted from your first year's membership subscription should you choose to join during or within 5 days following the Rally*

RALLY SHIRTS *Orders must be received and paid for by Nov. 28th*

MINIBUS TOURS *Book and pay by December 31st*

STAR INSURE RIDES SUNDAY *Please indicate number of riders inc. pillions participating.*

Gravel Ride	
Seal Ride	

MEAL RATE SPECIALS *Most meal rates are special Rally rates, with meals served in the Rally Room, and must be pre-booked for purchase at these prices*

ACCOMMODATION SPECIAL *Rally Special - Room Rates \$199.00 for either king bed unit or twin queen bed unit*
Book directly with Copthorne Hotel using our booking code #72266 to get the Rally Special Rate
Copthorne Hotel phone is #06 370 0500. Email is reservations@solway.co.nz
Please indicate willingness to room share, if appropriate

Disclaimer / Refund **By registering for this event:** Participants agree to abide by the BMW Motorcycle Club NZ Inc. Risk Management Plan as published in the Club's official monthly newsletter.
Refund policy: Hotel accommodation as per Copthorne's Terms and Conditions. **Registration:** At the discretion of the rally committee



Expert Care for Your BMW Ride

At **NZBike**, excellence in motorcycle service isn't just a promise; it's our passion.

Entrust your BMW to our certified Motorcycle Engineering expert and experience unparalleled care.

Your One-Stop BMW Motorcycle Hub

Professional Workshop Services

Our Christchurch workshop is a beacon for BMW enthusiasts. Our BMW-trained technician ensures your motorcycle receives the best care, from routine maintenance to advanced repairs.

Premium Online Shopping Experience

Dive into our extensive selection of motorcycle accessories and parts at NZBike.co.nz. Renowned for having the best tyre range in South Island, we ensure a smooth experience, delivering your needs swiftly across New Zealand.



Exclusive HEX Innovate Distributor

As NZ's sole distributor of HEX Innovate, we offer the sophisticated HEXGS911 and ezCAN, specifically designed for BMW motorcycles. Elevate your ride with these top-notch accessories.



TOURING AROUND NZ? WE ARE CONVENIENTLY LOCATED JUST OFF SH1

FIND US AT 21A Sheffield Crescent, Burnside, Christchurch

PHONE
[03-366-3000](tel:03-366-3000)

EMAIL US
workshop@nzbike.co.nz
info@nzbike.co.nz

FOLLOW US
facebook.com/nzbike.co.nz
instagram.com/nzbikeshop/

Area Report: Top of the South/Te Taiuhu

Gretchen Holland



11th August Kaiteriteri



We left Richmond and headed for the Flat Rock Café in Kohatu via Eighty Eight Valley and Golden Downs. There, we sat out in the sunshine and caught up with everyone. It was great to see former member John back on his bike after a couple of years down time.

Then it was down the Motueka Valley and West Bank Road through to Kaiteriteri for a picnic lunch on the beach. There were a few corners with grit on them but no

frosty spots so it was pleasant riding. We practised the corner-man system even though we all knew where we were going. The sun, calm water and golden sands at beautiful Kaiteriteri were too much for Anja and Gretchen who couldn't resist having a swim. It was nippy but not toooo bad. Anja shouted chocolates for her special birthday to top off our picnic lunches and then after more 'catching up with everyone' we made our own way home.



Area Report: Top of the South/Te Taiuhu

Gretchen Holland



Riders were –Peter W, Anja, Gretchen, William, Dave, Tony, Murray, Terry
Visitor – John Gretchen #949

ANCHOR INN MOTEL
KAIKOURA

BOOKINGS ESSENTIAL
BOOK ONLINE

KAIKOURA'S SUPERB WATERFRONT LOCATION

WELL APPOINTED **FAMILY APARTMENTS** - One Bedroom Garden View (Sleeps 4); Two Bedroom Ocean View (Sleeps 4)

STUDIOS (Sleeps up to 2)
Executive Ocean View with Spa; Superb Ocean View; Standard Garden View

Reservations Freephone 0800 72 00 33

208 Esplanade, Kaikoura | Ph: (03) 319 5426 | Email: info@anchorinn.co.nz
www.anchorinn.co.nz

The Anchor Inn Motel is owned and run BMW Club member Paul Meikle #3311

Area Report: Canterbury

Ralph Moore



Friday 9th August



Woodbury Store Cafe

Six of us mustered at Rolleston, and headed South down SH1 and turned off at Rangitata heading for Woodbury. Onto the back roads and our first taste of gravel. What looked good on the map turned out to be a nasty ford. Two bikes down!! So we took a more sedate route into Woodbury and our morning tea stop.



Stunning views near Hanging Rock

The day was sunny and warming up as we made a quick fuel stop in Geraldine, before heading out onto gravel through Hanging Rock and Cave, then onto Backline Road through to Wiamate.

Saturday morning, was 0 degrees and fog as we headed up the valley towards Meyers Pass. Within five minutes, we were in beautiful sunshine, and still zero degrees. There was snow lying on the cold faces and shaded gullies. I managed to lose traction on an uphill snow covered stretch of road and watched helplessly as everyone else rode past me. I had to walk my bike for one hundred metres. Lesson: A Tractionator GPS is not the best gripping tyre for an adventure bike!!



0 degrees and heavy fog at Wiahoa Forks

We rode down the Waitaki Valley and over Dansey's Pass, which had been closed a couple of days earlier due

to snow. We found it snow free and a bit slushy. Lunch was at Naseby, then back over Dansey's, and across the Waitaki , and over Elephant Hill. This is a narrow muddy climb and was fun to ride, although some people needed to be careful to avoid mud being thrown up by the bike in front.

Another very pleasant evening mixing with the locals. By now there were eight in our group, with Steve Parr joining us on his road bike. Sunday morning, Hans took charge in the kitchen and made us all porridge. Again we started in fog and 0 degrees but were quickly into sunshine as we wound up into Pentland Hills, and struck patches of snow and ice, as we climbed.

We rode a lot of muddy farm tracks to reach the Hakatamea Valley. The top of the Pass was covered in snow and we could see the Tekapo Basin was fog bound.

We soon dropped into the fog and -1 degrees, and found that we had ice forming on our jackets. Quickly back into sunshine as we climbed towards McKenzie Pass, and onto Fairlie for a compulsory Pie Stop. As we wound towards Geraldine, Rodney got a puncture in his rear tyre. We stripped it out and fitted the only spare tube that we had... A 21inch tube!! It worked well and got him home. It was a beaut weekend with a great bunch of friends.

Thanks to all.

Ralph #3082



Rodney at the top of Meyers Pass



Jacques and bike after a muddy day



Hakatamea Pass



Pentland Hills



FIM EWC Final: Chance for the World Championship title at the Bol d'Or.

- BMW Motorrad World Endurance Team heads to the finale of the 2024 FIM Endurance World Championship at Le Castellet as the current third-placed team in the standings.
- Markus Reiterberger, Ilya Mikhalchik, and Hannes Soomer will form the trio on the #37 BMW M 1000 RR this time.
- In the Superstock class, Japanese Team Étoile still has a chance for the title.

Le Castellet. The final showdown for the world championship title in the 2024 FIM Endurance World Championship (FIM EWC) will take place next weekend (12th to 15th September). The 24-hour classic Bol d'Or at Le Castellet (FRA) marks the season finale, and among the teams in contention for the title is the BMW Motorrad World Endurance Team. The BMW Motorrad Motorsport factory team, led by Team Manager Werner Daemen (BEL), currently sits third in the championship standings, trailing the leaders by 44 points. A total of 65 points are still up for grabs in the season's final race weekend.

Riding the #37 BMW M 1000 RR for the BMW Motorrad World Endurance Team will be Markus Reiterberger (GER), Ilya Mikhalchik (UKR), and Hannes Soomer (EST) taking turns in the saddle. Soomer, who has served as the team's fourth rider this season, steps in to



CORPORATE COMMUNICATIONS

replace Sylvain Guintoli (FRA) in the core trio, as Guintoli can't participate in the Bol d'Or due to personal reasons. Earlier this season, Soomer celebrated victory in the Superstock class at the 8-hour race at Suzuka (JPN) with Japanese team TONE RT SYNCEDGE 4413 BMW. Acting as the BMW Motorrad World Endurance Team's fourth rider at Le Castellet is Jan-Ole Jähmig (GER), who also competes with Team GERT56 in the International German Motorcycle Championship (IDM).

After finishing second in the class at Suzuka, Team Étoile with the #25 BMW M 1000 RR still has a chance at the Superstock title in the FIM Endurance World Cup. At the Bol d'Or, the team will feature riders Hikari Okubo, Kazuki Watanabe, Shogo Kawasaki, and Yudai Kamei (all JPN). The French Superstock team Tecmas-MRP-BMW Racing, racing with the #9 BMW M 1000 RR, aims for success at their home race. The team's three regular riders,

Kenny Foray (FRA), Jan Böhn (GER), and Loïc Arbel (FRA), will be rotating in the race. Another Superstock team comes from Hungary, the HERT by Moto Jungel team, with riders Bálint Kovács, Soma Görbe, Péter Sebestyén, and Máté Számadó (all HUN), competing on the #713 BMW M 1000 RR.

On the Tuesday before the final weekend, teams and riders had another chance to fine-tune their bikes during private testing at Le Castellet. The official sessions of the race weekend will begin on Thursday, 12th September, with free practice, the first qualifying sessions, and night practice. The starting grid positions will be determined on Friday, 13th September, in the second qualifying session. The 87th edition of the Bol d'Or will kick off at 15:00 o'clock on Saturday, 14th September, with the checkered flag falling 24 hours later.

Comments ahead of the Bol d'Or.

Sven Blusch, Head of BMW Motorrad Motorsport: "We are excited for an intense finale in the FIM Endurance World Championship. The BMW Motorrad World Endurance Team and our three riders Markus, Ilya, and Hannes will give it their all to keep the title fight open until the very end. Of course, we'll also need a bit of luck, but in a 24-hour race like the Bol d'Or, anything can happen. The goal is to be on the podium on Sunday afternoon, both in the race and the championship standings. In the Superstock class, Team Étoile team also has a chance to cap off the season with the title. The Tecmas-MRP Racing Team has already proved that it can win a 24-hour race with the BMW M 1000 RR. I'm keeping my fingers crossed for them all, as well as for the Hungarian team HERT by Motor Jungel. At the same time, our thoughts are with Sylvain and his family, and we wish them all the best."

CORPORATE COMMUNICATIONS

Werner Daemen, Team Manager BMW Motorrad World Endurance Team: "We have a very good and very reliable bike. We have our basic set up that works on all tracks and, to be honest, our expectations are quite high. We always aim for the podium or even the win and that is possible at the Bol d'Or. So we go for the win! We are very happy with the performance of all three riders. But we all also think a lot of Sylvain and his family, he is a real friend, so let's hope we can get this victory also for him."

Markus Reiterberger (#37 BMW M 1000 RR, BMW Motorrad World Endurance Team): "The test went very well. Right from the start, we had a good pace, and I was faster than my best race pace from last year. The bike felt good from the first laps, but we also tried a few things and found a good direction. My teammates also set great lap times, and especially Hannes, who had never ridden at Le Castellet before, and Jan-Ole, adapted well to the bike. We accomplished and sorted out a lot on the first day. Now we're heading into race weekend with excitement. We're well-prepared, the track suits us and our BMW M 1000 RR. Things are looking good, and we have one goal: we want to win and claim the possible world championship title. Although it's difficult to achieve the title on our own, nothing is impossible. We'll just try to get the maximum out of the weekend and leave the rest to race fate, which always plays a big role in the EWC. Us riders and the team are highly motivated to finish the season in the best possible way."

Ilya Mikhalchik (#37 BMW M 1000 RR, BMW Motorrad World Endurance Team): "I can't wait for this final FIM EWC race of the season and I am quite positive. After the strong result at Suzuka we also have a good base set up for the track here at Le Castellet. The target is for sure to fight for the maximum points in qualifying, to try to get pole position and to do a constantly good job in the race to have a great result after 24 hours. Then we will see what we can achieve in the end."

Hannes Soomer (#37 BMW M 1000 RR, BMW Motorrad World Endurance Team): "We had a good test day. As it's my first time here, the focus for me is to find a good and solid race pace for Saturday and Sunday and to learn as much as possible from my teammates to help them as much as possible in the race."



On Your Knees, Pyrenees

Dave Morris

On your knees, Pyrenees, you're about to be Conquistada.
The BMW riders are heading your way, in numbers the size of an armada.
Clear the road, the best of riders - experienced in their skills;
They're great on the flat, but are in their element on twisty bendy hills.

So, it's first past the post; it's adios; the kiwis have come in force,
Not losing sight of the fact of international rapport; (- of course!)
They are over the jet-lag now bright-eyed, - bushy-tailed;
They're confident too; - a 'winning streak': They really have it nailed!

There will be stops on the way, to take in the views,
And keep 'tail-end Charlie' happy, with his part on the cruise.
Retire early evening to a red wine, and a feed of tasty Chicken Paella,
Under the shade of a big yellow and red shady umbrella.

Then long after the Kiwis' departure and the snow doth cover the road,
So, the stories and antics will morph, from a muse to a legendary ode.
And the BMW sound will resound 'round the hills as an echo,
"No es un adiós, será un, "¡hasta luego!" *



BMW MOTORBIKES SERVICING & REPAIR



Book now! We're open at our new location.



**Unit 2, 6 Westgate Drive, Westgate,
Auckland**

Specialising in servicing and repair of the BMW motorbike brand only. The BMW technicians waste no time when it comes to working on your motorbike repair and with no long booking delays, we will aim to have you back on the road sooner.

ACCIDENT REPAIRS

Being officially recognised The Bike Maintenance Shop can repair your BMW motorbike on behalf of all major insurance companies and their partners.

TYRE FITTING

We can take care of all of your tire and tire fitting requirements.

**CALL FOR SERVICE
09 818 5448**



or scan and book from our website

021 128 5546
contact@thebmshop.nz

Unit 2, 6 Westgate Drive, Westgate, Auckland
www.thebmshop.nz



Like us on
Facebook

thebikemaintenanceshop



Must check the expiry date
on my membership card
with BMWMC

Expiry date looms and don't

membership@bmwmc.nz



South Island RAG
1st - 3rd November 2024
Register Now at
www.bmwmc.nz



50th Annual Rally 2025
7th-10th February 2025

Register Now
www.bmwmc.nz



BMWMC

Remember to write a note
about my travels and
email it to

editor@bmwmc.nz



**Motorcycle Rego
Cashback programme**

Great news! We have extended the programme until 30 June 2025. We offer experienced riders, who are eligible, \$200 Cashback on their motorcycle rego.

Coming Events - Details on our Website



BMW Motorcycle Club
New Zealand



20
September
2024



GS Rallye 2024 - 20th-22nd September

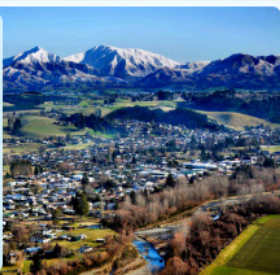
Updated: 13/06/2024 GS Rallye 2024 - In association with BMWMC NZ Weekend of the 20th-22nd September 2024 Registration/Entry - Click [HERE](#)
Location: Lakes Ranch, Rotorua All brands of motorcycles welcome Route options of: Sealed Gravel Mud/Gravel Challenge sections (Full knobbles essential) Cost(s) below... Old School route sheets will be provided and you can make your [...]

[Find out more](#)



*Lakes Ranch, Rotorua,
79 Lake Rotokawau Road
Rotorua, Owhata, 3074
New Zealand
[+ Google Map](#)*

01
November
2024



South Island RAG Rally - 1st-3rd of November 2024

Updated: 04/07/2024 South Island RAG Rally: 1st-3rd of November 2024 This year's awesome Rally is going to be held in the small West Coast town of Light, Reefton, it has this nickname due to it being the first town in the Southern Hemisphere to have a public supply of electricity (street lighting). Originally named Reef [...]

[Find out more](#)



*South Island,
New Zealand
[+ Google Map](#)*

07
February
2025



2025 National AGM/Rally, North Island - Fri 7th - Monday 10th February 2025

Updated: 01/07/2024 BMWMC AGM Rally 2025 - Friday 7th - Monday 10th February 2025: This will be the 50th Anniversary of our club and not to be missed! Save the dates - more details and registration to follow nearer the event: The location is TBC but will be South of the North Island. Email any [...]

[Find out more](#)

04
April
2025



NIRAG 2025

North Island RAG: Subject to confirmation but most likely this event will be:
Venue: Taylor Lodge, Tongariro National Park, 20 Pokaka Road, Erua 3990.
Arrive Friday, April 4th (afternoon) to departure Sunday morning April 6th.
Registration: Available nearer the time Most of you will know the format but here's a guide: Accommodation options: Bunkrooms, tent [...]

[Find out more](#)



*Taylor Memorial Lodge,
36 Pokaka Road
Erua, 3990 New Zealand
[+ Google Map](#)*



LIKE YOU, ESCAPING THE ORDINARY IS IN OUR BLOOD



We design insurance for those who live for the ride.

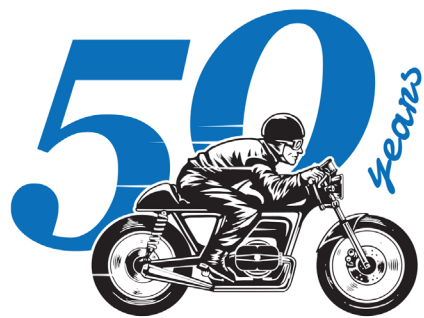
Nothing comes close to the journey. All that matters is being connected to the road or trail, and the bike. Some people don't get it. We do. Two, three or four wheels... whatever your bike, with Star Motorcycle, we'll help you protect your means of escape.

ESCAPE THE ORDINARY

→ Call: 0800 250 600

→ Visit: starinsure.co.nz





BMW Motorcycle Club

New Zealand 1975 - 2025



BMW Motorcycle Club
New Zealand



Making Life a Ride!

As part of the 50th celebrations at the 2025 AGM and Annual Rally, we would like to compile an audio-visual presentation of rides and events over our Club's history.

Please share with us any photos or videos you might have over the period, preferably with some explanatory notes that could be incorporated into this presentation.

There is a link in the covering email to upload any files. Any problems or if you require the link again, please email treasurer@bmwmc.nz, thank you



BMW Motorcycle Club of Aotearoa New Zealand - Risk Management Plan

The BMW Motorcycle Club of Aotearoa New Zealand is an organisation whose members join together for rides to nominated venues and for other social occasions. The organiser nominates the destination and regrouping stages along the way, but otherwise has no influence upon the way that riders behave on the road. There is no element of organised competition in the rides.

Riding Code:

1. All Club members on Club rides shall do so as individuals responsible for their own safety and shall take into account the safety of others they encounter on the ride.
2. Club members are responsible for ensuring that their motorcycles are in a safe and legal condition, the minimum being to Warrant of Fitness standards.
3. Riders, Pillions and sidecar passengers where required, shall have as a minimum standard New Zealand Approved Motorcycle Helmets, and stout footwear, gloves and clothing that will be capable of protecting their body in the event of a mishap.

4. Club Members are to go to the aid of any others suffering a mishap.

5. Rider organisers shall nominate the destination for the ride as well as any regrouping locations or other stops. The organiser is not responsible for the other riders' behaviour or safety.

6. Riders shall ride at a speed and in a way that is comfortable for them. Do not ride outside your personal comfort envelope.

7. If a rider is unfamiliar with the route, they shall arrange to follow another rider who does know the way and who travels at a comfortable pace.

8. Riders who decide to travel as a group shall adopt a staggered riding formation such that there is an accepted following distance to the rider immediately in front. A reasonable following distance is indicated by a time of two seconds between riders for dry conditions and longer for inclement conditions and on loose surfaces.

9. The Ride Organiser and or the Club are not responsible for the participants' safety, and all participants participate at their own risk. All participants are aware that they are travelling on open public roads and are responsible for their own safety and compliance with the Road Rules and Laws.

Marketplace - FOR SALE

To advertise, please email
newsletter@bmwmc.nz

Marketplace is a service for members of BMWMC, NZ.

Advertisements will be accepted from members, commercial traders and non-members when it is considered in our members' interest to do so. No charge is made for Marketplace advertising. The Editor and Executive reserve the right to reject or modify any advertisement considered inappropriate and take no responsibility for errors or omissions, the quality of items, claims made, or for any transactions that ensue.

Advertisements run for approx. 3 months from the date first published unless otherwise arranged with the Editor.

PRICE DROP

Xkulcha Adv Pants

Size 40 - \$150 - Very Good Condition

Contact Pieter : 027 256 6858 (Auckland)



Brand New Instrument Bracket to fit:

R60/71, R75/71, R80/71/T

R100S - 1978 to 1980

R80 1978 onwards

R100, R100CS, R100S - 1978 onwards

R65 - 1985 Onwards

BMW part 31 42 1 236 883

Motobins Part 87191.

Paul Meikle (Member #3311 - Kaikoura)

e: pdmeikle57@gmail.com

t: 03 319 5426



Marketplace - FOR SALE

To advertise, please email
newsletter@bmwmc.nz

For sale:

BMW Evo 4 helmet flip up front. Size
48-51 Silver metallic. Good condition and never dropped. \$200 with storage bag.

Rossi Black leather/wool lined boots. Calf length.
Excellent condition with synthetic sole. Size 5 NZ or 38.5 Eu. \$50

Darbi leather gloves, women's size Small. Excellent condition. \$30

Photos of anything
listed available by request.

Contact: Greg Buck

027 435 2483 or gsbuck@netz.co.nz





Area Representatives



NORTHLAND

Ian Macartney
027 281 0242
northland@bmwmc.nz

AUCKLAND

Stephen Parkinson
021 989 092
auckland@bmwmc.nz

WAIKATO

Paul Quilter
07 859 2512
waikato@bmwmc.nz

BAY OF PLENTY

Alan Belworthy
027 496 0748
bayofplenty@bmwmc.nz

TARANAKI

Wayne Higgins
027 506 6488
taranaki@bmwmc.nz

RANGITIKEI

Murray Petherick
027 433 6657
rangitikei@bmwmc.nz

EAST COAST

please contact
027 281 0242
eastcoast@bmwmc.nz

WAIRARAPA

Peter Tibbs (Aka Tibsy)
027 335 6843
wairarapa@bmwmc.nz

WELLINGTON

Denis Hulston
027 443 3604
wellington@bmwmc.nz

TOP OF THE SOUTH

Gretchen Holland
021 266 3867
topofthesouth@bmwmc.nz

CANTERBURY

Ralph Moore
027 284 7508
canterbury@bmwmc.nz

SOUTHERN

Tharon Knoetze
021 034 1760
southern@bmwmc.nz